

Road Map



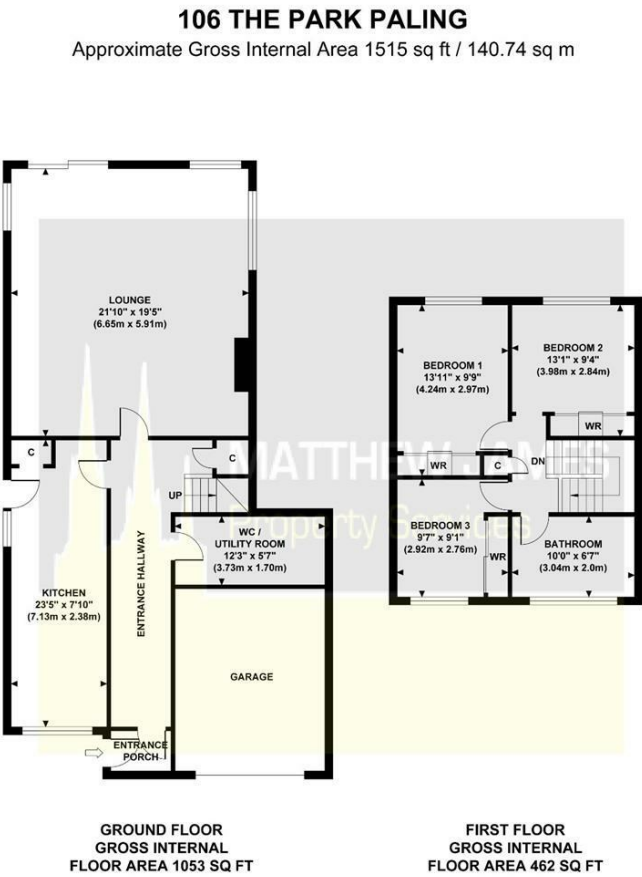
Hybrid Map



Terrain Map



Floor Plan



Viewing

Please contact us on 02477 170170 if you wish to arrange a viewing appointment for this property or require further information.

These particulars, whilst believed to be accurate are set out as a general outline only for guidance and do not constitute any part of an offer or contract. Intending purchasers should not rely on them as statements of representation of fact, but must satisfy themselves by inspection or otherwise as to their accuracy. No person in this firms employment has the authority to make or give any representation or warranty in respect of the property.

CONTACT INFORMATION

24a Warwick Row, Coventry CV1 1EY  
02477 170170

info@matthewjames.uk.com  
www.matthewjames.uk.com

Facebook  
Twitter



106 The Park Paling  
Cheylesmore, Coventry CV3 5LL

£385,000

3 1 1 C





# 106 The Park Paling

Cheylesmore, Coventry CV3 5LL

£385,000



Approach

Garage

Entrance Hallway

Kitchen/ Dining

23'5 x 7'10

Utility Room & W.C

12'3 x 5'7

Extended Lounge

21'10 x 19'5

First Floor Landing

Bedroom One

13'11 x 9'9

Bedroom Two

13'1 x 9'4

Bedroom Three

9'7 x 9'1

Family Bathroom

10'0 x 6'7

Rear Garden

